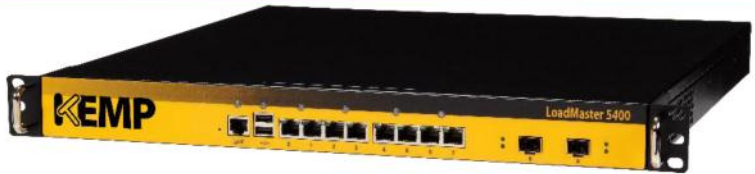


- ◆ Application Delivery Optimization
- ◆ Server Load Balancing
- ◆ SSL Acceleration

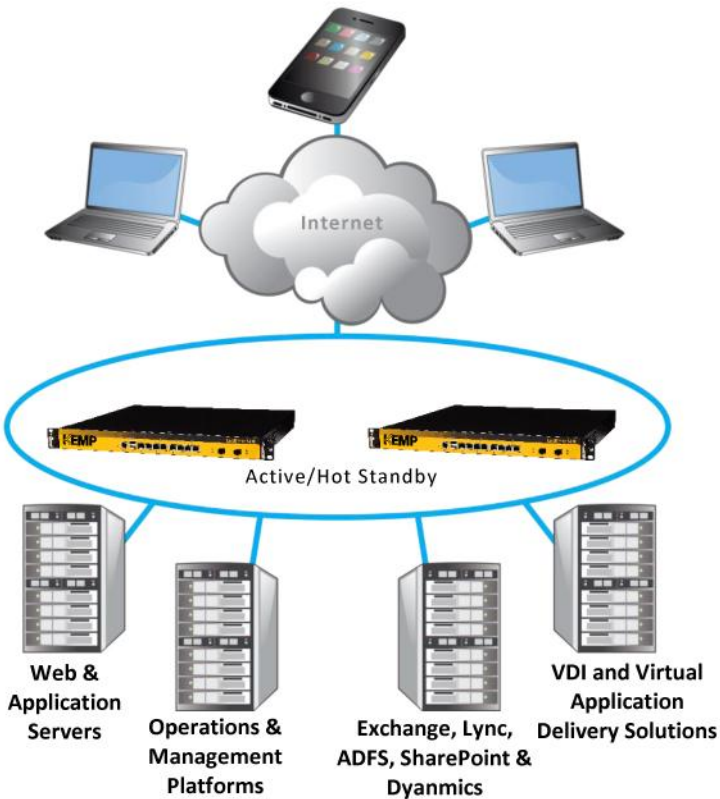


### Superior SSL Performance for Enterprise Environments

Featuring support for up to 7000 SSL transactions per second (TPS) with 2048 bit RSA keys, standard integrated Global Server Load Balancing (GSLB) and 8.8 Gbps of throughput performance, the LoadMaster™ 5400 is optimized for Enterprise environments and high-transaction e-commerce infrastructures. Rock solid performance allows for predictable delivery of critical workflow applications and customer facing web services.

The LoadMaster™ 5400 is an essential component to include for high availability of critical line of business applications, customer facing web services and corporate intranets in large Enterprise deployments.

Combining the latest advancements in Layer 4 to Layer 7 application delivery technology, LoadMaster™ is the ADC of choice for providing high availability services in cloud, web and application infrastructures.



The LM5400 can load balance up to 1000 servers and 1000 virtual clusters



Feature	Benefit
High Performance L4/7 Server Load Balancing	Ensures each user gets the best application experience possible.
Server Hardware and Application Health Checking	Guarantees user requests will be directed to only "available" servers and "available" applications.
IP and L7 Persistence	Ensures that users maintain continuous connections with the specific server where "their" transactional data is available – even if the IP address changes or the session is temporarily interrupted.
SSL Acceleration/Offload in ASIC	Optimizes server performance and user experience for encrypted application content.
Advanced Application Delivery Features	Accelerates traffic and reduces latency through intelligent content caching, content compression and content switching.
Intrusion Prevention Systems (IPS)	Thwarts application-level threats even when masked in encrypted application content.
Global Server Load Balancing	Allows intelligent distribution of delegated services across multiple data centers based on location of client or other pre-configured rules.
Pre-Authentication and Single-Sign On	Validates user access to resources prior to forwarding requests to application servers and facilitates a simple user login experience across multiple applications serviced by LoadMaster™.

# LoadMaster™ 5400

Specifications v7.0\*



**#1 Load Balancer**  
in price/performance

## Standard

- Server Load Balancing (SLB) for TCP/UDP based protocols
- SSL Acceleration/Offload in ASIC
- Layer 7 Content Switching
- Advanced, App-Transparent Caching Engine for HTTP/HTTPS protocols
- Optimized Compression for Static and Dynamic HTTP/HTTPS Content
- Layer 7 Intrusion Prevention System (IPS), SNORT-Rule Compatible
- Up to 1000 Virtual and 1000 Real Servers
- IPv6 support for addressing and features
- IPv6 - IPv4 bidirectional conversion
- NAT-based forwarding
- Support for Direct Server Return (DSR) configurations
- Support for MS RDS with Session Reconnection Built-in
- Configurable S-NAT support
- VLAN Truncing (802.1Q)
- Link Interface Bonding (Modes supported: 802.3ad, Link Failover)
- Edge Security Pack (Pre-Authentication & SSO)

## Performance

- Max Balancer L4 Throughput Up To 8.8Gbps
- Max Balancer L7 Throughput Up To 8.5Gbps
- 110,000 L7 (http) requests per second
- 400,000 L7 concurrent connections
- 25,600,000 L4 concurrent connections
- SSL Acceleration
  - 1K Keys up to 9,300 TPS
  - 2K Keys up to 7,000 TPS

## SSL

- ASIC-enabled, SSL Acceleration w/ support for 2048bit RSA Keys
- Support for EV (Extended Validation) Certificates
- PCI-DSS ready SSL Implementation
- Support for up to 1000 SSL Certificates
- Support for Third Party Certificates
- Automated SSL Certificate Chaining
- SSL Certificate Signing Request (CSR) Generation
- STARTTLS offload for mail protocols (POP3, SMTP, etc.)
- FIPS 140-2 Level 1 capable

## Health Checking & High Availability

- ICMP health checking of server farm machines
- Layer 7 checking for DNS, FTP, HTTP, IMAP, NNTP, POP3, SMTP, WTS (RDS), TELNET
- Automatic reconfiguration for defective real server machines
- Active/Hot Standby configurations for High Availability
- Stateful Failover

## Administration

- Fully configurable using Web User Interface (WUI)
- Secure, SSH and HTTPS (WUI) remote access for administration
- Easy start and maintenance using wizards
- WUI-based Help Assistant
- Automation/Orchestration via REST API
- Real time performance and availability displays
- Preconfigured Applications templates



- Console port for local administration
- Remote syslogd support
- Selective restore of LoadMaster™ and Virtual Service data
- Support for Connection Draining
- Download software updates for LoadMaster™ firmware
- WUI Log Reporting with Tabbed Browser Support
- SNMP support for event traps & performance metrics
- Diagnostic shell with in-line tcpdump

## Scheduling and Balancing Methods

- Round Robin
- Weighted Round Robin
- Least Connection
- Weighted Least Connection
- Agent-based Adaptive
- Chained Failover (Fixed Weighting)
- Source-IP Hash
- Layer 7 Content Switching
- Global Server Load Balancing (GSLB) Included

## Sticky (Persistence) Connection Options

- Source IP (L4)
- SSL SessionID (L4)
- HTTP/HTTPS Browser-session (L7)
- HTTP/HTTPS WebClient-session (L7)
- RDP Login ID (L7)
- Port Following for mixed HTTP/HTTPS sessions

## Security Functionality

- Layer 7 Intrusion Prevention System (IPS),
  - SNORT-Rule Compatible
- Global & per VS Black list and White list (Access Control List)
- IP address filtering
- Firewall filtering (everything forbidden except VS's)
- DDoS mitigation, including L7 rate based attacks

## Hardware Platform

- Intel Xeon Quad-Core Processor
- 8 X 1GbE Auto-negotiating, Full Duplex Eth. Ports
- 2 X 10G (SFP+) Modules
- Solid State Storage
- 8GB RAM
- Local admin via console/VGA and USB
- Dimensions: (1U) 426 x 450 x 44(mm). Weight ~ 19lbs (8.5kg)
- 2 x 200W ATX Power Supplies (Redundant, Hot-Swap)
- Certifications: CE/FCC Class A, UL, RoHS Compliant

\* Specifications are subject to change without prior notice.



2F Republic Glass Bldg., 196 Salcedo St., Legaspi Village, Makati City  
Tel.: (632) 813-4162/63 | Fax: (632) 812-9310  
info@mannasoft.com  
www.mannasoft.com