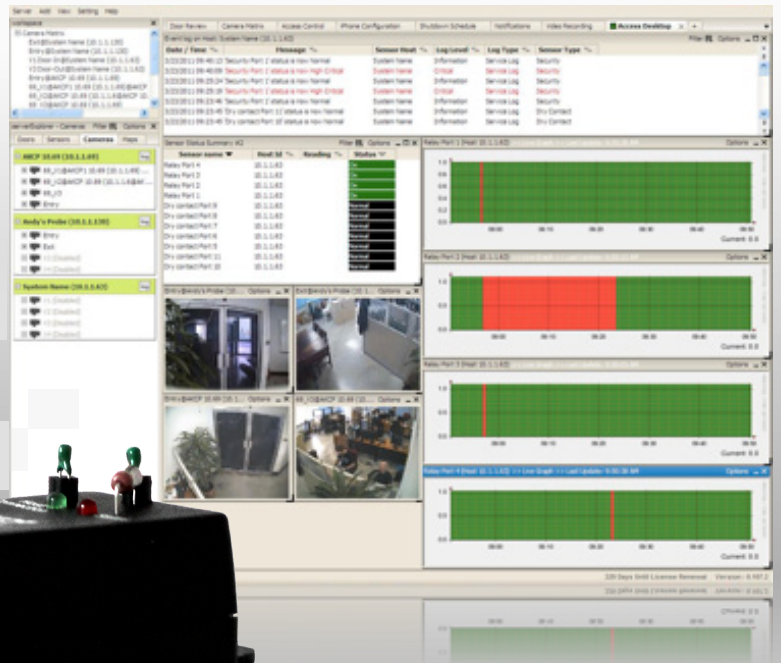


## Airflow Sensor - AFS00



## Airflow Sensor

The AKCess Pro airflow sensor is designed for systems that generate heat in the course of their operation and a steady flow of air is necessary to dissipate this heat generated. System reliability and safety could be jeopardized if this cooling airflow stops.

The Airflow sensor is placed in the path of the air stream, where the user can monitor the status of the flowing air. The airflow sensor is not a precision measuring instrument. This device is meant to

measure the presence or the absence of air flow.

In addition to the sensors ON or OFF status, the airflow sensors condition can also be read via an SNMP get using its OID. SNMP traps sent when critical. SNMP polling via get available. Web browser interface available. When an alarm condition is activated the description and location of the fault can be sent via email, page.

This is not a precision sensor, it is ONLY designed to sense the presence and non-presence of airflow and not to measure the amount of airflow. It is best used to send an alert in the case of a fan, AC failure or when airflow is present when it should not be.

## Airflow Sensor's Main Features

- On/off alarm signal of airflow
- Accurate, cost effective flow sensing
- Operates from a single +5 V DC Power Supply which powered by the sensorProbe
- 2 LEDs indicate the status of Airflow and that the sensor is securely plugged into the sensorProbe
- Electronics mounted in a small plastic case
- Sensor type – open/closed contact switch sensorProbe auto detects the presence of the airflow sensor
- Up to 2 airflow sensors per sensorProbe2, 8 per sensorProbe8 and securityProbe
- Full autosense including disconnect alarm
- Data graphically displayed via a web page
- AFS00 can be extended to your desired cable length using one of our CAT5 extension cables, CABXX, or you can provide your own cable of any length up to 60 feet.

## Technical Specifications

**Data Collection :** via Network Management

**Operating Temperature :** -20°C to 60° C

**Communication Cable :** RJ45 Jack

**Sensor Type:** Thermistor / ON or OFF

**Sensor Power:** Powered by sensorProbe or securityProbe base unit. No external power required.

**Trap Information:** Warning sensor number, Sensor description, On or Off condition.

**Note:** *The Airflow Sensor is only compatible with the securityProbe, securityProbe 5E, securityProbe 5ES, newer sensorProbe2 shipped after October 2009, sensorProbe4, and sensorProbe8, sensorProbe8-X20/X60 units shipped after July 1st 2011.*



SAVE PAPER. SAVE TREES.  
SAVE THE PLANET.



2F Republic Glass Bldg., 196 Salcedo St., Legaspi Village, Makati City  
T: 813-4162/63 F: 812-9310 E: info@mannasoft.com  
www.mannasoft.com