

ZConverter

Server Recovery

The powerful imaging backup and dissimilar server recovery!

Have you ever experienced to reinstall everything from windows server and applications despite keeping a backed-up system image and a backup server when you happen to meet an unexpected server failure?

Have you ever imagined "If we can backup lively your operating systems and applications in business hours and we don't need to do overtime job in midnight...?"

ZConverter protects your business and saves your time and effort

ZConverter Server Recovery provides the fast and easy-to-use server backup & recovery technology.

It skips the reinstallation process of operating system and applications even if recovering a backed-up image to a dissimilar server.

By supporting a dissimilar server recovery, online backup, data replication and scheduling function, it minimizes IT administrator's server recovery burden, time and cost.

Dissimilar Server Recovery Technology

ZConverter Server Recovery process is performed in three steps: Imaging, Archiving and Recovering.

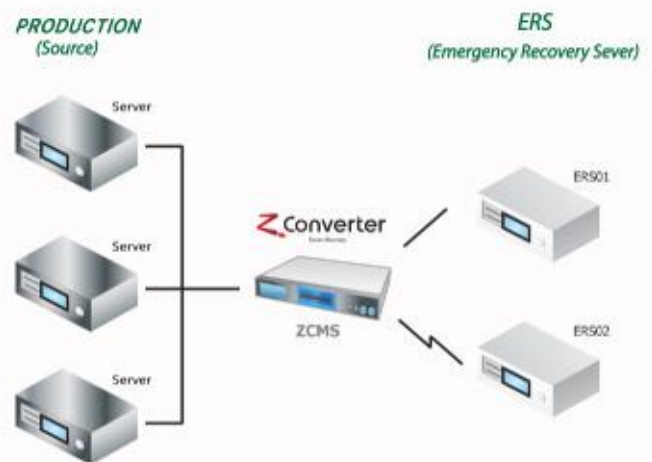
Online imaging backup and dissimilar server recovery technology minimizes the server downtime.

Imaging

This is the first step to backup an operating system and applications by ZConverter live backup technology without a backup agent installation.

It minimizes the CPU utilization for live system backup of production servers.

During online system backup, you will find to increase only average 10 percentages of CPU utilization. Competitors may add average 50 percentages of CPU utilization to your production servers.



Archiving

Archiving an image is the second step to archive the backed-up images captured from imaging step. ZConverter Management Server (ZCMS) saves them in "Image Repository" for server recovery

These images can be updated periodically by ZConverter differential update and scheduling function

Recovering

This is the key step to recover your server to a dissimilar emergency recovery server (ERS) or a failed production server. You don't need to reinstall operating system and applications both cases.

In case multiple server failures are happened, they can be recovered to multiple recovery servers simultaneously.

ZConverter

Server Recovery

Features

- Online System Image Full Backup
- Differential Update on full backup image
- Backup Scheduling (Once, Daily, Weekly, Monthly)
- Multi-Server Backup & Recovery
- Backup & Recovery without agent installation
- Dissimilar Server Recovery (Virtual & Physical Server)
- Bare Metal Server Recovery
- Remote Server Recovery by Wake-On-Lan
- Low CPU Utilization during online system backup
- Centralized Management

Applications

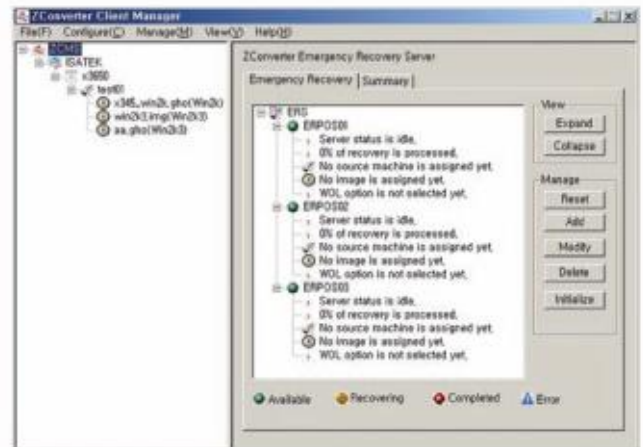
- Server Backup & Recovery
- Emergency Server Recovery to a dissimilar server
- Disaster Recovery Center Deployment
- Datacenter Guaranteed Server Recovery Time Services
- Datacenter Relocation Services

Benefits

- Save system backup and recovery cost
- Minimize server services downtime
- Minimize server recovery time
- Save disaster recovery deployment time & cost
- Simplify complicated server recovery process
- Lessen an administrator's server recovery burden

Product Line

- ZConverter Server Recovery Standard Edition
- ZConverter Server Recovery Enterprise Edition
 - ZConverter Production Server (SAL)
 - ZConverter Management Server (ZCMS)
 - ZConverter Emergency Recovery Server (ERS)
- ZConverter Server Recovery Datacenter Edition (SaaS)



Platforms

Operating Systems	Virtual Servers	Server Vendors
Windows Server 2008 Enterprise	Microsoft Hyper-V	IBM
Windows Server 2008 Standard	VMware	HP
Windows Server 2008 Web	Xen	DELL
Windows Server 2003 Enterprise	VirtualIron	SAMSUNG
Windows Server 2003 Standard	Hitachi Virtage (HVM)	Customization*

Customization* means ISA Technologies will be able to support another vendor server or assembled server on partners or customers request by reasonable way.

Philippine Distributor:



2/F Republic Glass Bldg., 196 Salcedo St.,
Legaspi Village, Makati City
Tel. No.: (632)813-4162/63 | Fax No.: (632)812-9310
www.mannasoft.com